



WESLEYAN CAMPUS MINISTRY
TEXAS A&M COMMERCE

WESLEYAN CAMPUS MINISTRY 2010 REVIEW

CONNECT

“CONNECT” is our intention and passion which is demonstrated in our hospitality. WCM is committed to serve as the facility, where students feel welcome and at home. Students regularly enter the doors to meet up with friends, study or take a nap. Some may enter as strangers, but soon find, they have found faithful and generous friends.

FYI (for your insides) Free Lunch: The ministry of providing a meal is made possible by loving and caring people from FUMC-Commerce, and in partnership with churches of the East District, who have a heart for the students on the campus of Texas A&M University-Commerce. During 2010, WCM served approximately 80-100 students weekly. The joy and great appreciation from the students make this ministry opportunity a success.



Our ministry is a place to nurture the spiritual appetite of students at Texas A&M University-Commerce.

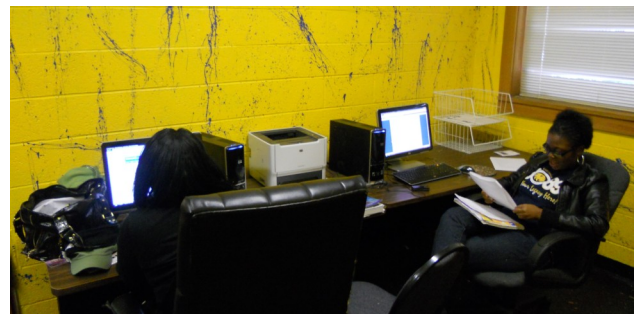
Our mission is to make disciples of Jesus Christ through three foundational principles; Connection, Growth, and Service.



2010 NOTABLES

2010 has proven to be a year of great growth and opportunity for Wesleyan Campus Ministry. Below are a few celebrated notables:

- The newly created computer lab with 2 computer stations and printing capabilities with facility-wide wireless internet was heavily used in 2010. WCM has become an ideal study environment.
- *Share the Love Sunday* was an opportunity for members of FUMC-Commerce to experience the student led worship service and dinner. This event helped to provide the funds needed to “spruce” up WCM with new furniture.
- WCM gained exposure and gain student interest from participation in organizational fairs and student events around campus.





GROW

As disciples of Jesus Christ, our mission is to make disciples. We are unable to live out this mission unless we know how to be, and thus have the information to “go and do”.

REGENER-8: Is a casual small group gathering for discipling approximately 15-20 students weekly. The life studies presented and conversations shared, enrich and foster learning and growing in the Word. The most notable study during 2010 was the “Give UP to Get to God”. This 4-week study taught about the things that hinder a closer relationship with God. The application of the lesson was to enter into a time of “giving up” something for 10-days to grow closer to God. The testimonies and “GROWTH” proved to be phenomenal step towards “making disciples”.

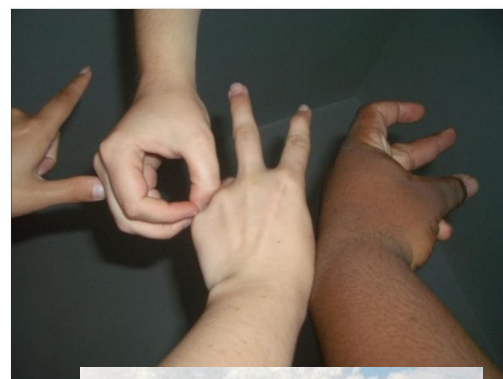


SERVE

The guiding principle for WCM is “SERVICE”. Students have participated in both FUMC-Commerce’s Helping Hands and Yam Gleaning events. This partnership provided the students the opportunity to interact with church members, while also fulfilling “SERVICE” within the community and making a difference.

MISSIONS: Funds were provided for a WCM student (Ryan Klinck) to participate in a mission trip to Juarez, Mexico during the summer of 2010. Ryan wrote about this experience and mentioned: *“I am grateful for the opportunity to be able to aid in furthering the notion of hope beyond our own country to the smiling faces of a family who will have a solid structured home, rather than a makeshift cardboard walled house.”*

WCM students have a heart for SERVICE.



WCM is a recognized student organization on the campus of Texas A&M University-Commerce, but also a ministry with the heart for nurturing the spiritual appetites of all we encounter. We will continue to give way for CONNECT, GROW, and SERVE ministry programs that will increase our impact on the campus and in the community .

